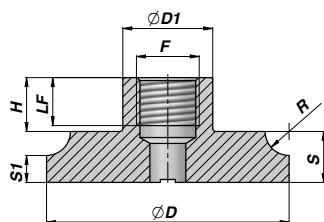
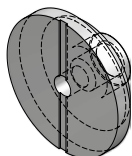


CHMSCFI

NEW!

FONDELLO CON ENTRATA OLIO
END PLUG WITH INLET PORT



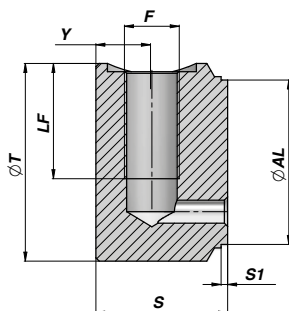
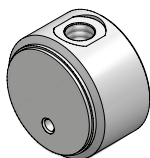
Codice Code	ØAL	ØD	S	S1	R	F BSP	LF	H	ØD1	kg	Confezione Box	Pz Pcs
CHMSCFI040	40	41	12	7.0	5.0	3/8"	15	17	25	0,14	Z00CHMSCFI040	100
CHMSCFI050	50	51	12	5.0	7.0	3/8"	15	17	25	0,18	Z50CHMSCFI050	50
CHMSCFI060	60	61	15	4.0	8.0	3/8"	15	17	25	0,31	Z50CHMSCFI060	50
CHMSCFI070	70	71	15	7.5	7.5	1/2"	16	18	30	0,44	Z50CHMSCFI070	50
CHMSCFI080	80	81	17	9.0	8.0	1/2"	16	18	30	0,64	Z20CHMSCFI080	20
CHMSCFI090	90	91	17	9.0	8.0	1/2"	16	18	30	0,80	Z20CHMSCFI090	20
CHMSCFI100	100	101	20	10.0	10.0	1/2"	16	18	30	1,11	Z10CHMSCFI100	10

MATERIALE : ACCIAIO S355J0 (Fe510C) - S355JR (A105)

MATERIAL : STEEL S355J0 (Fe510C) - S355JR (A105)

CFVP

FONDELLO CON ENTRATA OLIO
END PLUG WITH INLET PORT



Codice Code	ØAL	ØT	F BSP	LF	Y	S	S1	kg	Confezione Box	Pz Pcs
CFVP04005004	40	50	1/4"	30	17	40	2	0,54	Z20CFVP04005004	20
CFVP05006006	50	60	3/8"	35	17	40	2	0,77	Z25CFVP05006006	25
CFVP06007006	60	70	3/8"	35	17	40	2	1,10	Z20CFVP06007006	20
CFVP06307306	63	73	3/8"	35	17	40	2	1,17	Z10CFVP06307306	10
CFVP07008006	70	80	3/8"	35	17	40	2	1,41	Z10CFVP07008006	10
CFVP08009508	80	95	1/2"	45	20	50	2	2,49	Z10CFVP08009508	10
CFVP09010508	90	105	1/2"	45	20	50	2	3,11	Z05CFVP09010508	5
CFVP10011508	100	115	1/2"	45	20	50	2	3,70	Z05CFVP10011508	5

PREDISPOSIZIONE PER VALVOLA PARACADUTE "VUBA"
FITTED FOR THE HOSE BURST VALVE "VUBA"

MATERIALE : ACCIAIO S355J0 (Fe510C) - S355JR (A105)

MATERIAL : STEEL S355J0 (Fe510C) - S355JR (A105)